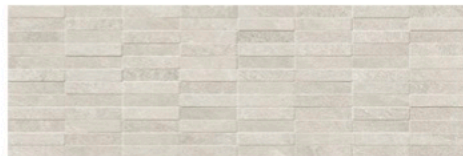




Interior flooring.  
The same flooring will be used in outdoor  
areas but it will be anti-slip.  
**PAV. ARDESIA 90X90 AVORIO**



Bathroom tiling  
**REV. ARDESIA 60X120 AVORIO**



Bathroom tiling  
**REV. ARDESIA FLAGSTONE 40X120 AVORIO**



Bathroom tiling  
**REV. ARDESIA TILT 40X120 AVORIO**



**LOOP**

Washbasin in all the bathrooms.

Loop wall-mounted basin mixer with cold open system.



**LOOP**

Washbasin To be chosen according to bathroom furniture.

Loop basin mixer with cold open system for click-clack waste valve.



**LOOP**

Wall-mounted shower mixer 2 ways.



**LOOP**

Loop shower head.



**Shower drainage system**

Shower glass with black profile.

Shower floor like the rest of the house.



**ROCA**

Compact concealed cistern



**ROCA**

Compact concealed cistern



**ROCA ONA**

Rimless compact wall hung toilet made of white sanitary porcelain with horizontal outlet.



# hönnun

## BATHROOM FURNITURE - HÖNNUN - B100 SERIES

With a wide variety of handle or pull-opening options, the units in this series are available in lacquered finishes, laminates and high quality woods.

The drawers can be opened by means of a handle, a handle or a pull-out handle.

The drawers are full-extension drawers with cushioned brake. The interior is grey metal.





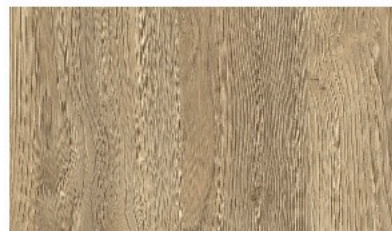
Possibility to choose the colours of the cabinet doors.



Kitchen worktop & barbecue.  
**DEKTON AERI Natural**



Cladding kitchen walls  
**SALONI REV. ARDESIA 60X120 AVORO**



Laminate kitchen furniture.  
**ROBLE GLADSTONE NATURAL**



**BOSCH INDUCTION HOB**

8 Series Induction hob 70 cm Black, with profiles



**BOSCH OVEN**

4 Series Oven with steam 60 x 60 cm  
Stainless steel



**BOSCH MICROWAVE OVENS**

4 Series Built-in microwave oven



**BOSCH REFRIGERATOR**

4 Series Built-in combi fridge freezer 177.2 x  
54.1 cm Door sliding door



**BOSCH CEILING EXTRACTOR FAN**

6 Series Ceiling extractor fan 90 cm Stainless steel



Kitchen tap with pull-out spout - black finish.



**BOSCH DISHWASHER**

2 Series Fully integrated integrated



Undermount stainless steel sink



EXAMPLE OF DOORS - HEIGHT OF 2.40

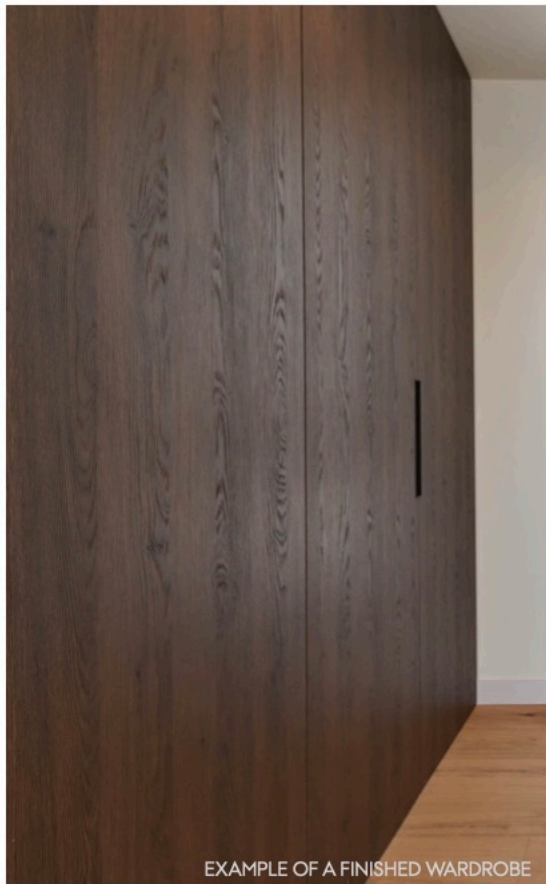


Concealed hinge - Interior doors



Magnetic locking door - Interior doors

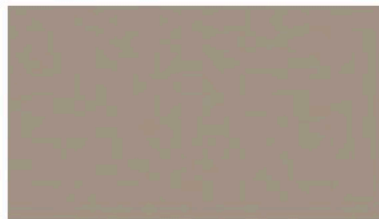




**E EGGER**



Cabinets - Exterior  
**ROBLE CHARLESTON MARRON OSCURO**



Cabinets - Interior  
**CLAY GREY U727 ST9**



Possibility to choose the colours of the cabinet doors.

# ALUGOM



## ALUGOM SERIE IBIZA

Minimalist sliding door with RPT, designed especially for large frames in response to new architectural trends that seek to combine maximum transparency with a minimum view of profiles.

Its innate rolling system with multiple bearings integrated in the bottom frame permits weights per leaf of up to 800 kilos with motorised opening, with manual openings recommended not to exceed 350 kilos per leaf.

This system has frames with one, two, three or more rails, allowing for large openings such as terrace or porch openings. Minimalist 30 mm front face central leaf profile, an identity that gives the system open spaces with a greater visual field.

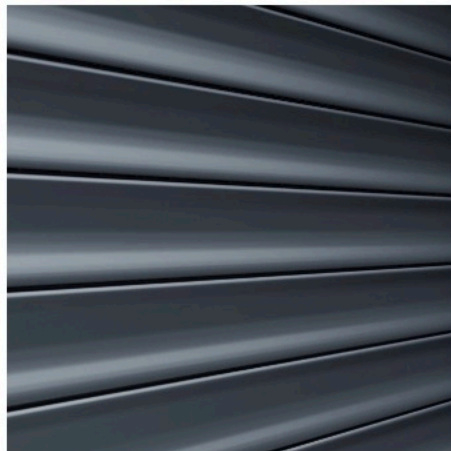
The closing of the leaf with the frame is carried out by means of a multi-point security system operated by means of a handle.

Wide range of profiles, which facilitate the composition of different designs as well as multiple possibilities in its implementation on site; open corner solution, hiding leaves within the masonry wall and frames integrated into the floor completely hidden, multiple rails to accommodate the number of leaves required by the project.

Maximum glazing thickness of 38 mm.

It marks the line of excellence in the range of sliding openings with minimum aluminium profile for large glass dimensions.

Possibility of choosing a colour from the range of standard colours.



External aluminium shutters in the same colour as the exterior carpentry, motorised and with hidden drawer on the inside.

Blinds will be installed in all the windows of the house.





#### **EFFAPEL APOLO 5000**

The APOLO 5000 Series stands out for its sober design and straight lines.

Its discreet presence confers a minimalist and distinguished touch to your decoration.

We recommend installing it throughout the house except in bathrooms and kitchens.



#### **EFFAPEL APOLO 5000**

We recommend installing it in bathrooms and kitchens

#### **ELECTRICAL PANEL OF THE DWELLING**



#### **CEILING LIGHT SPOTS**

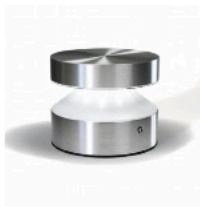
They are installed throughout the interior of the house according to the electrical plan of the project.

Led light 3000k



#### **BLACK LANTERNS OUTSIDE THE HOUSE**

Lanterns will be installed on the four facades of the house according to the electrical plan of the project.



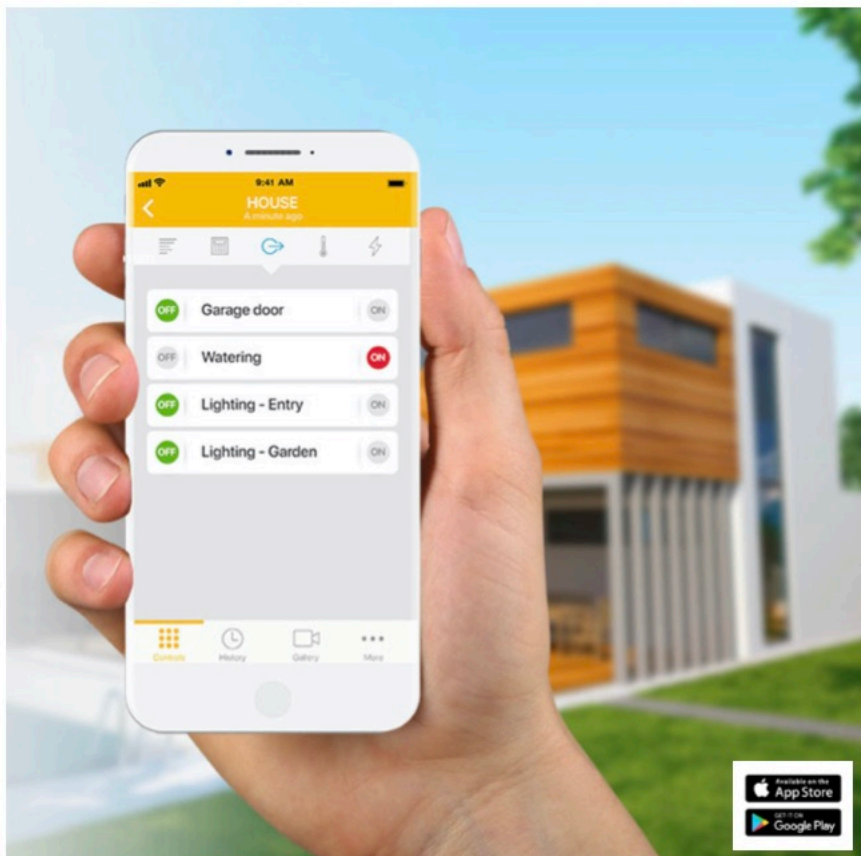
#### **STREET LAMPS AT THE ENTRANCE TO THE STREET DOOR**

Street lights will be installed on the pillars of the pedestrian and vehicle gate at the entrance to the plot.



#### **VIDEO INTERCOM**

Video intercom system for exterior door opening. Includes app for control from mobile phone or tablet.



## SECURITY SYSTEM

Your family is safe with JABLOTRON 100+ alarm system. All this can be achieved by a remote control via the application MyJABLOTRON.

It includes 3 indoor sensors.

Possibility of extending areas.



## HEATING & HOT WATER

Heating and DHW by aerothermal energy efficiency system in compliance with the CTE. Ducted air conditioning with built-in machine. This system provides the perfect combination of underfloor heating and ducted air conditioning.



Underfloor heating:

- 2 collector boxes (1 per floor)
- Through hot water pipes



Heat pump Baxi PLATINUM BC Plus Monobloc 2 10 MR, monobloc outdoor unit, single-phase, power 10 kW, 8600 cooling capacity, COP 4.95, EER 4.55 and energy efficiency A+++.



DHW storage tank with a capacity of 200 litres and 1.81 m<sup>2</sup> of exchange surface. Energy class C. Floor-standing installation.

## AIR CONDITIONING

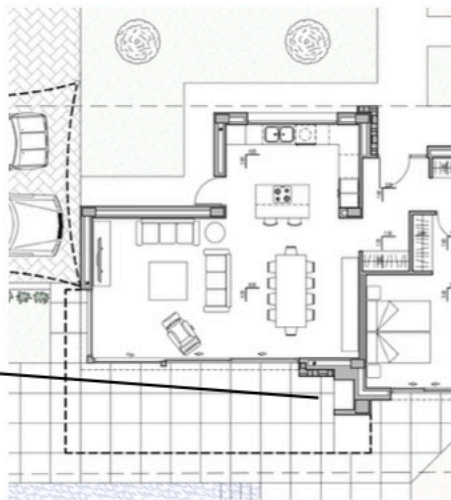
- Ducted air conditioning with built-in machine.
- Installation of ducts upstairs and downstairs
  - Air conditioning machine by floor

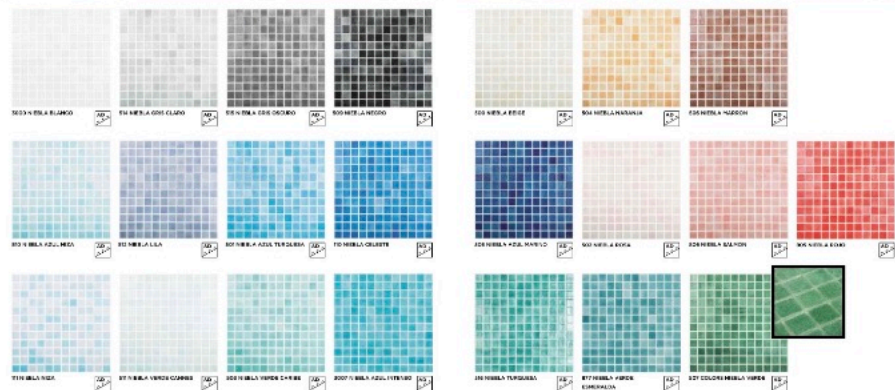


## VENTILATION SYSTEM

Ventilation system of the house with mechanical extraction of the interior air through ducts from the kitchen and bathrooms to the chimney on the roof.







Swimming pool mosaic - to choose from the catalogue - misty colours



**ASTRALPOOL Victoria Plus**  
1 x swimming pool filtration pump



**SWIMMING POOL FILTRATION SYSTEM**  
ASTRALPOOL ICE D.750



**RAIN BIRD IRRIGATION PROGRAMMER**  
- 3 zones  
- motorised solenoid valves



Outdoor swimming pool shower: